



[View Vaccine Information](#)

- [New CDC Quarantine Guidelines](#) New

COVID-19 Hotline (800) 722-5725

The COVID-19 hotline is a service operated by the healthcare professionals at the KY Poison Control Center who can provide advice and answer questions. The COVID-19 Hotline (800) 722-5725 can answer general COVID-19 vaccine questions.

For General Inquiries

Please send an email to KYcovid19@ky.gov

Healthcare Provider Guidance

Kentucky's Healthcare Guidance for Healthcare Providers, Labs and Facilities

[LEARN MORE](#)

Kentucky Coronavirus Monitoring

Current as of January 4, 2021



COVID-19 Current Incidence Rate in Kentucky

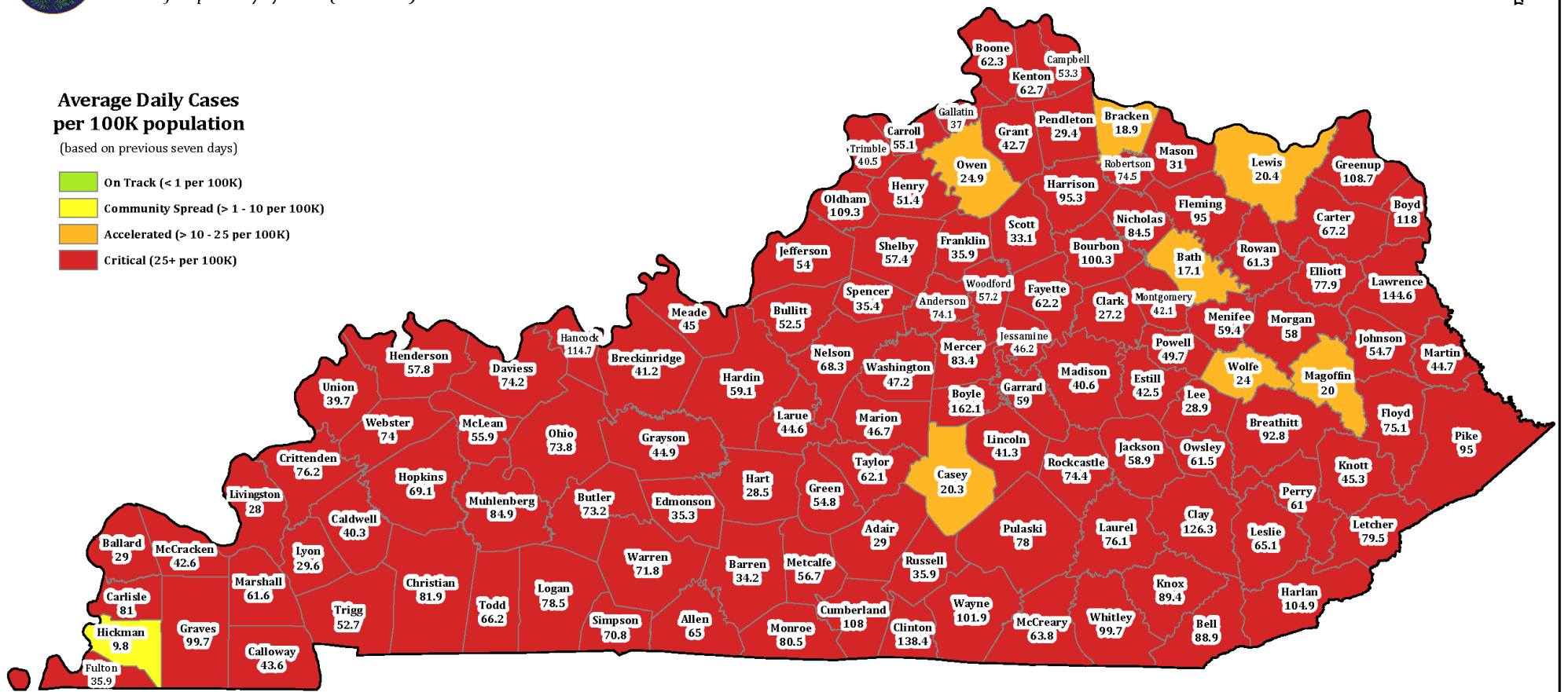
Date of Report: 1/4/2021 (4:28 PM)



Average Daily Cases per 100K population

(based on previous seven days)

- On Track (< 1 per 100K)
- Community Spread (> 1 - 10 per 100K)
- Accelerated (> 10 - 25 per 100K)
- Critical (25+ per 100K)



Overall Current Incidence Rate
62.62

Population values from the 2019 US Census Bureau Estimates

Total number of cases used in the calculations: 279,142 Cases

Data Source: Kentucky Department for Public Health

Red counties as of Thursday, December 17, 2020

This information will serve as guidance for red county decision making and community planning for the week of Monday, Dec. 21 through Sunday, Dec. 27, 2020.

[View Data](#)

The 7-Day incidence is calculated by taking the total number of unique cases in each county over the past 7 days, divided by 7 to get a daily average, divided by the U.S. census bureau county population, and multiplied by 100,000 to get the incidence per 100,000 people. The cases counted each day are based on the date an investigation was opened in NEDSS (i.e., National Electronic Disease Surveillance System). Duplicate cases are removed before the calculation, so each positive case is only included once. NOTE: State and local health department data will vary for a variety of reasons including data entry timing, communication processes, and 7-day averaging.

Interactive Maps

View Confirmed Cases, Cases by County, Cases by Sex, Cases by Age Group, Confirmed Deaths, Deaths by Sex and Deaths by Age Group.

[Desktop Dashboard](#)

[Mobile Dashboard](#)

In the event of a discrepancy between case confirmations, please note kycovid19.ky.gov is reporting confirmed cases by the Kentucky Department of Public Health (KDPH). We are working diligently to confirm cases as they are reported to KDPH.

[COVID-19 Daily Case Incidence Rate Maps](#)

Daily Reports

[KY COVID-19 Daily Report](#)

[Long Term Care and other Congregate Facilities Update](#)

[K-12 COVID-19 Dashboard](#)

[Archived COVID-19 Daily Reports](#)

Total Positive

279,143

Probable: 54,795- Confirmed: 224,348

Deaths

2,749

Probable: 190- Confirmed: 2,559

Total Tested

3,504,553

PCR: 3,224,871- Serology: 102,490- Antigen: 177,192

Positivity Rate*

11.18%

Recovered

37,455

*Based on a 7-day rolling average; Switched on 10/19/2020 to electronic laboratory reports as the sole source of data for the positivity rate. Learn more about how KDPH determines the [Statewide Positivity Rate](#)

**Over the Christmas and New Year's holidays, Kentucky has experienced a significant decrease in test reporting from major laboratories. We expect to see increased fluctuations in the 7-day positivity rate for the week following the New Year's holiday due to changes with testing and reporting.

Note: Data includes cases of COVID-19 reported to KDPH.

[KY COVID-19 Case Classification](#)

Guidance for Celebrating Winter Holidays

[Full Guidance](#)

[One Pager](#)

[Spanish](#)

White House Coronavirus Task Force Reports for Kentucky

[December 27, 2020](#) [December 20, 2020](#) [December 13, 2020](#) [December 6, 2020](#) [November 29, 2020](#) [November 22, 2020](#)
[November 15, 2020](#) [November 8, 2020](#) [November 1, 2020](#) [October 25, 2020](#) [October 18, 2020](#) [October 11, 2020](#)
[October 4, 2020](#) [September 27, 2020](#) [September 20, 2020](#) [September 14, 2020](#) [September 6, 2020](#) [August 30, 2020](#)
[August 23, 2020](#) [August 16, 2020](#) [August 9, 2020](#) [August 2, 2020](#) [July 26, 2020](#)

Healthy at Work

Our phased approach to reopen Kentucky's economy

[LEARN MORE](#)

COVID-19 Related Actions taken by Gov. Andy Beshear

Daily actions and executive orders taken by the Governor

[Learn More](#)

TeleHealth

Promoting, advocating and supporting telehealth adoption across the Commonwealth

[Learn More](#)

KYSAFER

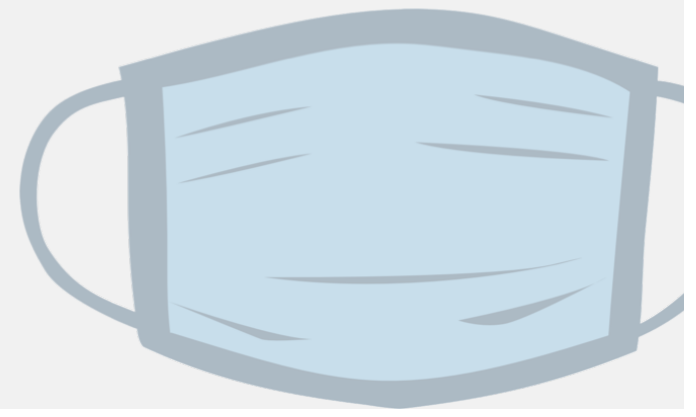
Report observations of non-compliance with rules that keep our fellow Kentuckians safe. 1-833-KYSAFER

[VIEW REPORTING OPTIONS](#)

Team Kentucky Fund Financial Assistance Application Portal

The Team Kentucky Fund is overseen by the Public Protection Cabinet. The program will be administered through a partnership with the Community Action Kentucky, Inc.

View a list of frequently asked questions about Governor Beshear's Executive Order related to face coverings.



[Learn More](#)

Price Gouging

Information regarding possible price gouging, contact the Office of the Attorney General Consumer Protection Branch.

[Report Online](#)

[888-432-9257](tel:888-432-9257)

Other Resources

[Wear masks properly sign](#)

[Wear masks properly sign - Spanish](#)

[Masks are required sign](#)

[Masks are required sign - Spanish](#)

[COVID-19 Survivor Support Information](#)

[Healthy at Work sign](#)

[Healthy at Work sign - Spanish](#)

[Healthy at Work sign - French](#)

[Do not enter if sick sign](#)

[Do not enter if sick sign - Spanish](#)

[Grocery Store Signage for Customers](#)

[Grocery Store Social Distancing Signage](#)

[Grocery Store Signage for Staff](#)

[FDA: Food Safety and the Coronavirus Disease 2019](#)

Kentucky State Agencies Respond to COVID-19

[Kentucky Department of Education](#)

[Finance and Administration Cabinet](#)

[Kentucky Labor Cabinet](#)

[Governor's Office of Agricultural Policy](#)

[Kentucky Commission on the Deaf and Hard of Hearing \(KCDHH\)](#)

[KCDHH COVID-19 Updates](#)

[KDPH Food Safety Branch](#)

For COVID-19 information in multiple languages, visit [Resources in 150+ Languages \(Source: Endangered Language Project\)](#)

Centers for Disease Control and Prevention

Visit [CDC.gov](#)

[Cabinet for Health and Family Services](#)

[Policies](#) [Security](#) [Disclaimer](#) [Accessibility](#)